



Armoury Road, Colchester, CO6 3JW

Price £350,000

Situated off of a semi-rural lane in the much sought after village of WEST BERGHOLT, Gallant Richardson are able to bring to the market this well proportioned two bedroom semi-detached home. This beautifully presented house has been extended by it's current owner and boasts beautifully manicured gardens to both front and rear. In addition there is off road parking and a semi-integral garage. The village of West Bergholt offers good local primary schooling, a doctor's surgery, local shop and access to the A12 as well as a short drive to Colchester's North Station with 'fast services' to London's Liverpool Street Station taking less than 60 minutes.

Double Glazed side Entrance door to:

Reception Hall:

Understairs storage cupboard, tiled floor, doors to:

Lounge:

15'4" x 8'7" (4.68 x 2.64)



An open plan lounge area with fireplace housing gas fire with surround, radiator, stairs to first floor, open plan walk through to:

Dining Area:

14'0" x 7'10" (4.27 x 2.39)



Double glazed door leading out onto the rear garden, dual aspect double glazed windows to side and rear, radiator.

Kitchen:

8'11" x 7'1" (2.72 x 2.16)



A beautifully presented kitchen comprising work surfaces with cupboards and drawers under and matching eye level units, integral pull out table, inset single bowl stainless steel sink unit with mixer tap, inset four ring gas hob with electric oven beneath and extractor over, tiled splashbacks, plumbing for washing machine, wall mounted integrated gas fired boiler, tiling to floor, double glazed window to front.

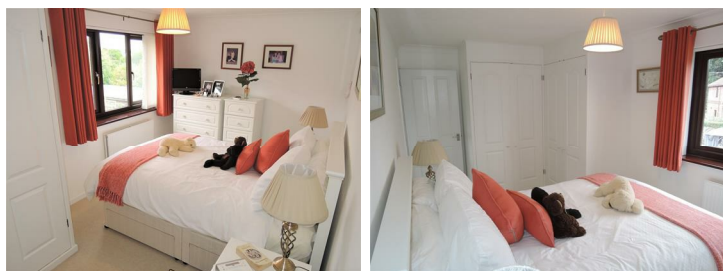
First Floor Landing:



Double glazed window to side, wall mounted gas fired Baxi heater, airing cupboard housing lagged copper cylinder with immersion heater, door to:

Bedroom One:

15'3" x 8'9" (4.67 x 2.68)



Double glazed window to rear, range of built in wardrobes, radiator, built in over stairs storage cupboard.

Bedroom Two:

9'1" x 8'3" (2.77 x 2.52)



Double glazed window to rear, radiator, built in storage cupboard.

Shower Room:

6'8" x 5'9" (2.05 x 1.76)



White three piece suite comprising corner tiled shower cubicle with shower, low level flush W.C. pedestal wash hand basin, double glazed window to front, radiator, tiling to walls, chrome heated ladder style towel rail, extractor fan.

Rear Garden:



The beautifully maintained and tended to garden measures approximately 42'in length with lawned area, patio, sculpted borders with a wide variety of planting including shrubs and flowers. to the far end of the garden is a large storage shed measuring approximately 12' x 9'.

Front Garden:



To the front of the property there is concreted off road parking for up to two vehicles with lawned area and border with side access leading to the entrance door and rear garden.

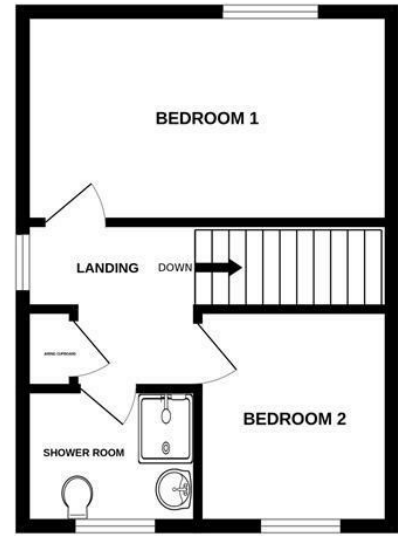
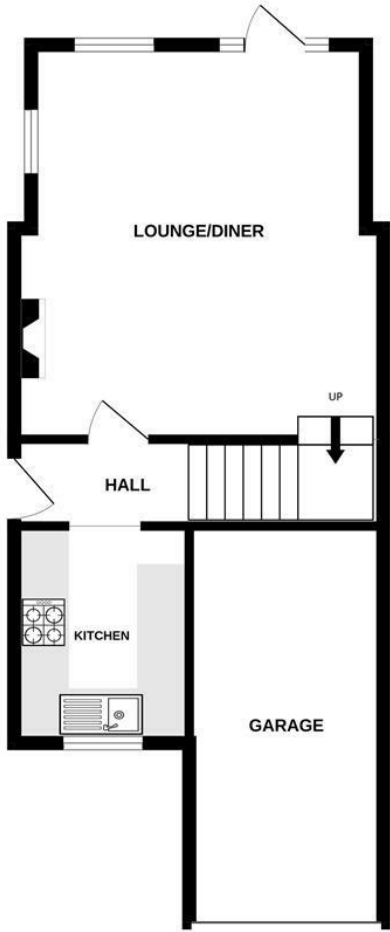
Garage:

16'5" x 7'11" (5.02 x 2.43)

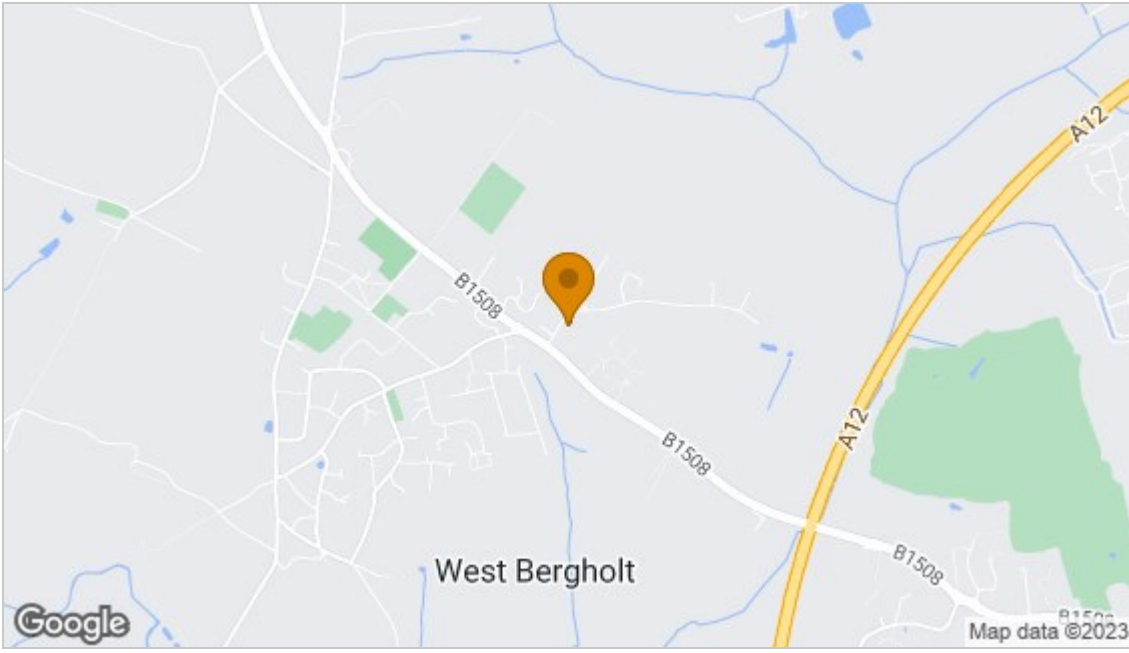
The semi-integral garage has an up and over door, there is power and light connected.

Disclaimer:

Every care has been taken with the presentation of these Particulars but complete accuracy cannot be guaranteed. If there is any point, which is of particular importance to you, please obtain professional confirmation. Alternatively, we will be pleased to check the information for you. These Particulars do not constitute a contract or part of a contract..



Whilst every attempt has been made to ensure the accuracy of the floorplan contained here, measurements of doors, windows, rooms and any other items are approximate and no responsibility is taken for any error, omission or mis-statement. This plan is for illustrative purposes only and should be used as such by any prospective purchaser. The services, systems and appliances shown have not been tested and no guarantee as to their operability or efficiency can be given.
Made with Metropix ©2023



Energy Efficiency Rating		Current	Potential
Very energy efficient - lower running costs			
(92 plus) A			85
(81-91) B			
(69-80) C			
(55-68) D		62	
(39-54) E			
(21-38) F			
(1-20) G			
Not energy efficient - higher running costs			
England & Wales		EU Directive 2002/91/EC	
Environmental Impact (CO ₂) Rating		Current	Potential
Very environmentally friendly - lower CO ₂ emissions			
(92 plus) A			
(81-91) B			
(69-80) C			
(55-68) D			
(39-54) E			
(21-38) F			
(1-20) G			
Not environmentally friendly - higher CO ₂ emissions			
England & Wales		EU Directive 2002/91/EC	

Disclaimer: Every care has been taken with the presentation of these Particulars but complete accuracy cannot be guaranteed. If there is any point, which is of particular importance to you, please obtain professional confirmation. Alternatively, we will be pleased to check the information for you. These Particulars do not constitute a contract or part of a contract.